

Inside the Fall 2022 GOST® Release

GOST Fall 2022 Improves Precision at Scale

The GOST Fall 2022 Release is our most comprehensive and innovative update yet. With improved result-to-risk linkage, modular management, and GOSTCrawl, your risk and threat management practice will be the most accurate, customized, and thorough on the market.

GOST Fall 2022 Improves Precision at Scale

The Fall 2022 GOST Release introduces three major improvements to support screening and vetting efforts at scale, allowing every institution the ability to effectively screen populations to identify and reduce risk. The latest update:

1. Improves the relationship between digital links and case-level scores by 200%,
2. Increases model control to improve responsiveness,
3. Formally introduces GOSTCrawl, a proprietary data capability of Giant Oak, for all GOST clients.

Paired together, these improvements comprise the Fall 2022 GOST Release and ensure that your risk and threat identification practice is as agile and precise as you need.

Result-to-Risk Linkage

Traditional screening tools consist of static lists or manual internet searches, both of which do not offer efficient analysis using all available electronic information. With static lists, an analyst misses out on all data from the point of last update; and with manual internet searches, an analyst spends more time sifting through unhelpful information to find a relevant digital artifact. GOST is the best risk screening tool on the market because it uses machine learning and artificial intelligence to re-index the open and deep web, organizing all available digital information to score risk.

Digital Artifact

A digital artifact is any combination of information expressed in a digital format and transferred within a digital ecosystem

GOST does this in two ways. First, each searched entity receives a Reliability score that indicates the likelihood the entity searched is in fact related to the identified negative news. Second, each searched entity receives a case-level Ranking score indicating the connection between derogatory information and the digital artifact.

Entity

An entity is any person, place, thing, or unit being screened by a GOST customer

The GOST Fall 2022 Release offers a 200% improvement in the risk connection between links and the Ranking case-level scores. This means that you and your team can easily understand why you are looking at a result within GOST, while reducing your analyst labor input by 50%. Clarifying the links between results and risk assessments reduces noise at both the link and entity level, meaning that customer results are more consistent and accurate than ever before.

Model Management

GOST has always used its artificial intelligence and machine learning capabilities to optimize for different derogatory behaviors. Built on the basis of behavioral science, previous versions of GOST identified negative news and derogatory information through models that relied on association with crime and derogatory concepts.

The GOST Fall 2022 Release takes the next innovative step and makes GOST modular, meaning that you and your team can plug in custom models created by GOST for different use cases. Going beyond binary calculations of risk associated with derogatory terms, the new GOST offers the ability to plug in custom data sources and create sentiment models that go beyond general adverse media and negative publicly available information.

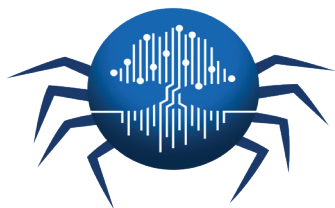
This richer feature space allows users of the new GOST to specifically investigate finer, more precise behaviors like confidence, sentiment, movement, and new information.



This state-of-the-art approach is less black-and-white, and allows the user to target more behaviors for definition and training. With the ability to customize models, you get to define what derogatory means to you, and the model will reflect your specific action criteria, using a wider range of data to draw features from and train against. This increase in model control means that you can be as responsive as needed to meet your risk challenges.

GOSTCrawl Expands Data

The internet is always changing, meaning that data existing one minute can be deleted the next. The GOST Fall 2022 Release introduces Giant Oak's newest offering: GOSTCrawl. GOSTCrawl is a proprietary capability of Giant Oak that finds and preserves webpages on the internet. "Crawling" the internet and preserving information from websites, GOSTCrawl is a truly robust data source for any client. To date, GOSTCrawl has indexed over a billion webpages, and it continues to grow by eight million webpages a day.



What this means for any risk analyst using GOST is that in addition to the live version of the internet being indexed through your respective derogatory model, GOST is also screening against the data of billions of webpages and their information. This ensures that you don't miss any derogatory information or negative news. GOSTCrawl's higher-quality entity extraction improves the precision of your risk practice's results.

Update Summary

The GOST Fall 2022 Release is our most comprehensive and innovative update yet. With improved result-to-risk linkage, modular management, and GOSTCrawl, your risk and threat management practice will be the most accurate, customized, and thorough on the market. With the new GOST, you can screen better than ever before, and stop problems – before they become one.

To learn more about GOST or to speak to one of our experts, visit us at:
www.giantoak.com

